



Release Notes  
Axiom Budgeting and  
Performance Reporting  
Version 2019.4.5



KaufmanHall

AXIOM

# *KaufmanHall*

5202 Old Orchard Rd. Suite N700  
Skokie, IL 60077  
(847) 441-8780  
(847) 965-3511 (fax)  
[www.kaufmanhall.com](http://www.kaufmanhall.com)

Support email: [support@kaufmanhall.com](mailto:support@kaufmanhall.com)

Kaufman Hall® is a trademark of Kaufman, Hall & Associates, LLC. Microsoft®, Excel®, and Windows® are trademarks of Microsoft Corporation in the United States and/or other countries. All other trademarks are the property of their respective owners.

This document is Kaufman, Hall & Associates, LLC Confidential Information. This document may not be distributed, copied, photocopied, reproduced, translated, or reduced to any electronic medium or machine-readable format without the express written consent of Kaufman, Hall & Associates, LLC.

Copyright © 2019 Kaufman, Hall & Associates, LLC. All rights reserved.

Version: 2019.4.5

Updated: 1/11/2021

# Contents

Special note about version 2019.4.4 .....	4
Summary .....	5
Product upgrade notes .....	7
New features summary .....	8
File collect utility for executive and manager monthly package reports .....	8
Multiple fixes and performance improvements .....	9
Issues resolved in 2019.4 .....	10
Driver, template, calc method, and other updates .....	10
Report updates .....	19
Issues resolved in 2019.4.1 .....	28
Driver, template, calc method, and other updates .....	28
Report updates .....	29
Issues resolved in 2019.4.2 .....	30
Driver, template, calc method, and other non-report items .....	30
Report updates .....	30
Issues resolved in 2019.4.3 .....	31
Driver, template, calc method, and other non-report items .....	31
Report updates .....	32
Issues resolved in 2019.4.4 .....	33
Driver, template, calc method, and other non-report items .....	33
Report updates .....	45
Issues resolved in 2019.4.5 .....	45
Driver, template, calc method, and other non-report items .....	45
Report updates .....	45
Manual configuration instructions and technical considerations .....	46

# Special note about version 2019.4.4

Axiom Budgeting and Performance Reporting 2019.4.4 includes significant resolved defects that have been addressed since the release of 2019.4. We highly encourage you to consider implementing this patch to improve your overall experience with the product.

# Summary

Kaufman Hall is pleased to announce the 2019.4 release of Axiom Budgeting and Performance Reporting. Each product release provides new features, enhancements, and configuration options to meet your needs. Many of these features and enhancements are a direct result of your feedback and suggestions.

**NOTE:** For the most updated release notes, view/download them from Axiom Help. After logging into your Axiom product, click the Main ribbon tab, and then click **Online Help > Budgeting and Performance Reporting**. At the top of the home page, click **Release Notes**.

Summary of the upgrade process:

1. **Review product release notes** – Review this document to familiarize yourself with the new features and functionality.
2. **Schedule an installation date** – Submit a request to your organization's Axiom Master System User (MSU) to contact [support@kaufmanhall.com](mailto:support@kaufmanhall.com) to schedule an installation date and time with at least three days of advance notice. The request should include the following information:
  - Desired Axiom Software platform version.
  - Desired Axiom for Healthcare product and version.
  - Indicate whether to first refresh the Axiom test sandbox with a copy of the production instance of Axiom and apply update(s) to it. If so, provide the soonest that Kaufman Hall can do this.
  - Propose an approximate two-hour downtime window when Kaufman Hall can apply update(s) to the production instance of Axiom during regular business hours, Monday through Friday 7 AM to 7 PM Central (except holidays recognized by Kaufman Hall).
3. **Complete manual configuration updates** – After installing the upgrade, review any manual setup steps needed to enable features for this version.

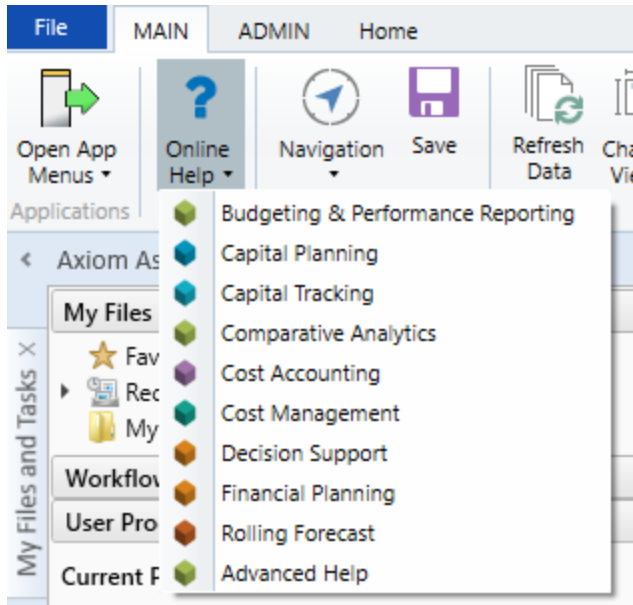
**IMPORTANT:** Some features in this release require configuration after installation and/or considerations to be aware of before or after installation. For more information, see [Manual configuration instructions and technical considerations](#).

## Help and Training

Kaufman Hall provides world-class resources at your fingertips directly within the Axiom Software system. Axiom Help provides topics, knowledge base articles, documents, webinar/training announcements, and videos to guide you through managing your system. To access these resources, do any of the following:

- **Online help** - From the Main or Admin ribbon tab, click **Online Help**, and then select the product. Axiom Help opens in a new browser window.

**NOTE:** The online help will only open for products you are licensed to use.



- **Contextual help** - Form/web-enabled features include contextual help directly within the user interface. This information provides a quick summary and/or instructions specifically related to the screen you are using. You can access this information by clicking the question mark in the upper right corner of the screen. For more detailed information, open Axiom Help by clicking **Open Help** at the top of the contextual help dialog.



### Escalating to Axiom Support

As always, we appreciate your commitment to Kaufman Hall. If you have any questions about your upgrade, please contact us by logging into Axiom, navigating to the online help for your product, and clicking the **Support** at the top of the home page.

# Product upgrade notes

**IMPORTANT:** You must apply the Axiom Software 2019.4 upgrade before applying any 2019.4 Axiom product upgrades. Axiom Software upgrades are backwards compatible so you can upgrade different products at different times, but you must upgrade to the Axiom Software 2019.4 *before* the first product upgrade. Refer to the **Axiom Software 2019.4 Release Notes** and **Axiom Healthcare Suite 2019.4 Release Notes** for considerations before upgrading. Apply this update **ONLY** if you have already applied the release and completed all the manual setup steps from the corresponding release notes.

When upgrading to Axiom Budgeting and Performance Reporting, keep in mind the following:

- This product upgrade contains updated templates, calculation methods, driver files, and remediated defects.
- KHA delivered reports may be replaced. Any report that you saved under a different name or created new will remain untouched. Replaced reports are available in Document History, if needed.
- Any KHA delivered report that was moved to a new location will automatically move back to its original location.
- KHA product templates and calculation method libraries will be replaced.
- Product task panes will be replaced.
- Process definitions will not be replaced.
- Security roles and sub-systems will be reset to their configured settings. All user security exceptions you may have made will remain intact.
- Specific items configured as part of your company or organization's implementation such as imports, exports, driver files, and process management files, will remain as is. Any required modifications to these areas are covered in the release notes, if required.

# New features summary

This section includes a description for each new feature included in this release.

**IMPORTANT:** Some of the new features and resolved issues listed in this document have been included in the latest Prototype file group. You must create a new file group from the 2019.4 release. For instructions, see "Rolling forward to a new budget year" in the Axiom Budgeting and Performance Reporting online help.

## File collect utility for executive and manager monthly package reports

The new Executive and Department Monthly Package file collect utilities allow you to manage the distribution of multiple monthly reports to multiple executive and management personnel - all from one location. You can use this utility to configure the source and output locations, email and file delivery methods, and email settings. You can then use file processing to distribute the reports by management personnel type (VP, Directors, Managers), as needed.

<b>Setup</b>	
Dept Monthly Package - File Collect	
Source and Output Settings	
Source file name prefix	Mar2018 .(DEPT.RPTMap).xlsx
Source file location	\\Axiom\Reports Library\Management Reporting Utilities\Report Distribution\SourceFiles
Output file name suffix (no extension)	RPTMap_(DEPT.RPTMap;DEPT.Approver)_ DeptMonthlyPackage .xlsx
Output file location	\\Axiom\Reports Library\Management Reporting Utilities\Report Distribution\SentFiles
Delivery Method Settings	
Assemble by	RPTMap
Save or email generated files	Save File and Send Email
Email Settings	
Subject text	Dept Monthly Package Mar2018 by RPTMap
Body text	Dept Monthly Package Mar2018 is attached and available for review \\Axiom\Reports Library\Management Reporting Utilities\Report Distribution\SentFiles
Recipient	Approver
Attach file to email	Yes

For instructions, see the following topics in the online help:

- "Distributing the Executive Report Package report"
- "Distributing the Manager Monthly Package report"



## Multiple fixes and performance improvements

We devoted much of the development time in this release to resolving known issues as well as improving feature performance and usability. For a list of fixes completed in this release, see the 2019.4 release notes.

# Issues resolved in 2019.4

The following tables list the resolutions for issues addressed in 2019.4, released on December 16th, 2019:

## Driver, template, calc method, and other updates

### Calc Methods

Issue	Description
PFB-06878 - Duplicate records caused by Current Year Budget Detail AQ11 on Expense tab [TFS 39147]	<p><b>Issue:</b> When running the Current Year Budget Detail query (AQ11), the system populates it from the prior year table (BUD2018_Detail, for example). Since the field definition row contains "RecordID" in cell B5, the existing RecordID for each record is pulled into column B from the prior year table. If a user inserts a New Detail Row at the bottom of the Detail block, the Add Detail calc method will assign the next sequential RecordID based on the number of detail records above within this block. This may create a duplicate RecordID, if that value assigned already exists in the rows above (from the prior year table).</p> <p><b>Resolution:</b> This issue mainly occurred if a prior year record was set to zero after initially populating the row. Upon interface the following year, the zero record was not returned, and this caused the sequential numbering sequence to be out of sync. Updated the RECORDID logic so this does not occur.</p>
PFB-07597 - URGENT: Projected Salary under "Salary" PComp method is incorrect [TFS 38913]	<p><b>Issue:</b> When using "Salary" as the primary ProviderComp model, it appears that the Projected Compensation for the current year is either over or understated pending on how much of an FTE is involved as the YTD portion of the calculation does not take this into account.</p> <p><b>Resolution:</b> Corrected by updating how the YTD value is calculated to match the same logic use in Remaining Projection.</p>
PFB-08054 - ProviderComp: The first Global Benefit row in the ProvideComp block has a cell reference that is pointing to a blank row [TFS 40216]	<p><b>Issue:</b> In the ProviderComp tab, the Insert PayType calc method includes a formula (in the calc method library) that references a cell that is always blank.</p> <p><b>Resolution:</b> Corrected by adjusting the formula in column DB to reference the Base Salary line 19 (column HM).</p>

Issue	Description
PFB-08079 - 29 Provider Config CM has hardcoded 'NA' for defaults [TFS 39798]	<p><b>Issue:</b> "New provider location defaults" in the Provider Configuration driver is hard coded to 'NA' in the calc method, which requires users to manually change it any time this driver is opened/refreshed.</p> <p><b>Resolution:</b> Corrected by updating cell V62 to be =AO62 so it will return any edits when refreshed. If blank, will return default of NA.</p>
PFB-08119 - #DIV/0 on Jobcode tab, Jobcode Block calc method [TFS 39761]	<p><b>Issue:</b> On row 26 of the 30-line Jobcode Block calc method on the JobCode tab, the formula results in #DIV/0 in columns BH-BS (FICA).</p> <p><b>Resolution:</b> Corrected by updating the FICA logic to error trap for instances where the department primary statistic is zero.</p>
PFB-08262 - Column E in Employee CM for Employee sheet formatted as Calibri 10 [TFS 40800]	<p><b>Issue:</b> The employee name cell (column E) in the Employee calc method is formatted as Calibri 10. The other cells are Segui 10. The difference in font makes it more difficult for users to make out the employee name.</p> <p><b>Resolution:</b> Corrected by changing the font color and font type to Segoe UI 10.</p>
Provider Detail CM missing formulas to the Driver Provider GlobalVolChg [TFS 39090]	<p><b>Issue:</b> When using ProviderDetail, the Amt Adjust column is missing the formula to acquire unit changes from theGlobalVolChg driver, if configured.</p> <p><b>Resolution:</b> Corrected by updating the formula in column FN to reference the GlobalVolChg driver.</p>
Duplicate records on ProviderDetail tab when expanded after providercomp is expanded [TFS 40321]	<p><b>Issue:</b> When using ProviderDetail, a duplicate set of provider blocks interfaced after expanding.</p> <p><b>Resolution:</b> Corrected by updating the AQs that control the expand/collapse option to eliminate the second occurrence of the provider blocks.</p>

## Drivers

Issue	Description
PFB-06218 - Budget Admin Expense Adjustments Issue with percentages [TFS 20767]	<p><b>Issue:</b> When inputting a percentage in the Admin Expense Adjustment driver, the note states "10=10%", but when looking at the plan file after making the adjustment, it appears that 10=1000%.</p> <p><b>Resolution:</b> Corrected by updating the formatting and how data is saved in the underlying table.</p>
PFB-07581 - BP-Budget Statistics Driver not ACCT.KHABgtCode Compliant [TFS 39756]	<p><b>Issue:</b> This driver is not ACCT.KHABgtCode compliant.</p> <p><b>Resolution:</b> Corrected the SumBy clause in AQ7 to refer to ACCT.KHABgtCode to be consistent/compliant with the data being grouped/brought into the plan files.</p>
PFB-08260 - Budget Configuration driver: Missing Formulas in Financial and Payroll Pd in Global area of Bud Config Driver	<p><b>Issue:</b> When using the Global section of the Budget Config Driver in the 2020 FG, the Financial and Payroll Period are missing formulas that look to column AW to pull back the saved period in the driver table. Budget groups that are added to the driver file do not experience this problem.</p> <p><b>Resolution:</b> Corrected by adjusting range U46:U47 to reference data input column AW of the Configuration tab.</p>

## Security

Issue	Description
PFB-07001 - Budget Security Update error "Could not validate security filter on table." [TFS 39867]	<p><b>Issue:</b> When users with explicit NO ACCESS to Financial, Payroll, RU, Provider, EmpRoster or Daily table types are updated via this tool, the system displayed the following error message: Could not validate security filters for &lt;user&gt; on table ACT_PAY1_2012. An expression of non-Boolean type specified in a context where a condition is expected near ")".</p> <p><b>Resolution:</b> Corrected by updating formulas in columns AA:AF in row 4 of the sheet calc method.</p>

## Tables

Issue	Description
PFB-08045 - DEPT Dimensions: Set default value for ShowOnList_Budgeting to FALSE similar to ShowOnList_Capital [TFS 39793]	<p><b>Issue:</b> Currently in the DEPT dimensions table, when adding a new department, the default for ShowOnList_Budgeting is set to 1 (TRUE). This creates an issue during the budget cycle as these newly added departments (via costing or data imports) display on the budget list for users to select.</p> <p><b>Resolution:</b> Corrected by changing the default value for DEPT.ShowOnList_Budgeting field changed from 1 (TRUE) to 0 (FALSE).</p>
PFB-08113 - Add SaveTagCustom to Employee_Roster [TFS 40477]	<p><b>Issue:</b> Currently the EMPLOYEE_ROSTER_YYYY table does not include a SaveTagCustom column. This makes it very difficult to delete only certain records from the table when re-importing data.</p> <p><b>Resolution:</b> Corrected by adding SaveTagCustom to the 2020 Employee_Roster table.</p>
PFB-08187 - ProviderDetail tab save errors related to SaveCustom column [TFS 40502]	<p><b>Issue:</b> The system displays save errors on the ProviderDetail tab for plan files of large dept numbers.</p> <p><b>Resolution:</b> In the BUD related tables, correcting by reviewing and increasing the MaxStringLength parameter to 50 as needed.</p>

## Templates

Issue	Description
PFB-05847 - Jobcode tab, column headers in cells EQ78:FB78 are referencing budget months in cells AG78:AR78 should be a formula driven by the rolling 12 actual history [TFS 39812]	<p><b>Issue:</b> In the Jobcode tab, column headers in cells EQ78:FB78 reference budget months in cells AG78:AR78 when in fact they should be formula driven by the rolling 12 actual history as defined in AQ7:Historical Hours Field Def row 17 (between columns EQ and FB).</p> <p><b>Resolution:</b> Corrected the category titles/labels to reflect the correct current actual year as well as the correct prior actual year. Also made formula changes to the JobCode tab in cell EQ147.</p>
PFB-06630 - CDMRevenue Tab doesn't print the last section related to non-key stats [TFS 25476]	<p><b>Issue:</b> When printing the CDMRevenue tab, only key stat rows are included in the output. Non-key stat rows do not display.</p> <p><b>Resolution:</b> Corrected by changing the print range to include non key stats section for all print views.</p>

Issue	Description
PFB-07795 - Bad formula in Add New Encounter ProviderDetail FinClass calc method [TFS 37623]	<p><b>Issue:</b> The system displays a cell formula error in PROVIDER tab during the recalculation due to the Add New EncounterProviderDetail FinClass calc method.</p> <p><b>Resolution:</b> Corrected by updating formulas in column BD of the ProviderDetail sheet to contain the updated match logic.</p>
PFB-07837 - CP to BP Integration - FTE issue [TFS 39917]	<p><b>Issue:</b> When transferring FTEs from Axiom Capital Planning to Axiom Budgeting, the import utility needs to convert the FTEs to hours to be consistent with the Budgeting methodologies of storing hours and not FTEs.</p> <p><b>Resolution:</b> Corrected by implementing several formula changes to the CP_Integration calc method to recognize the type as FTEs and convert to hours.</p>
PFB-07894 - CapBud method calc inconsistent for accounts where YTD exceeds the CYB [TFS 40215]	<p><b>Issue:</b> When using the capbud CYPMethod, those accounts where the YTD number exceeds the Current Year budget, the system appropriately projects zero for the rest of the year for all budget methodologies except for the Detail accounts. For those accounts, the system annualizes the rest of the year projection instead of projecting the rest of the year at zero.</p> <p><b>Resolution:</b> Corrected by adjusting the formula in line 1 of the Add New Detail and Detail calc methods.</p>
PFB-07919 - Enable Revenue_Stat calc method on STAT_REV to use global Revenue Adjustment %. [TFS 38086]	<p><b>Issue:</b> When using the Revenue_Stat calc method and adding a budget group exception to the Revenue Adjustments driver, the percentage does not populate in column AQ of the Stat_Rev tab.</p> <p><b>Resolution:</b> Corrected by updating the Revenue_Stat calc method to accommodate budget group exceptions for Revenue Adjustments.</p>
PFB-08001 - ProviderComp: GlobalProviderComp row has hardcoded zero in budget total column [TFS 38661]	<p><b>Issue:</b> When using the GlobalProviderComp option for new providers on the ProviderComp tab, column P (total budget dollars) incorrectly includes a hard coded zero instead of the proper reference to BF for the current row.</p> <p><b>Resolution:</b> Corrected by identifying Add New Provider calc method line 10 (column HM) difference in cell references compared to related line items and adjusting formula column P.</p>

Issue	Description
PFB-08093 - Provider Detail hide/expand block is causing data to get lost [TFS 40561]	<p><b>Issue:</b> When a user enters an input in the Manager Input, % Adjust, or Amt Adjust cells on the ProviderDetail tab for Misc_Provider, saves the sheet, and then collapses and expands the detail block, the inputs are not returned correctly. Re-saving the plan file can overwrite the input values.</p> <p><b>Resolution:</b> Corrected by adjusting the calc method library to store/retrieve data correctly when the block is collapsed and re-expanded.</p>
PFB-08111 - ProviderDetail inputs "stacking" issue [TFS 40592]	<p><b>Issue:</b> When a user enters an input in the Manager Input, % Adjust, or Amt Adjust cells on the ProviderDetail tab for Misc_Provider, saves the sheet, and then collapses and expands the detail block, the system aligns the input incorrectly with the Medicine_Provider inputs. This issue does not occur if the user saves, closes, and then re-opens the file - only when they collapse and re-expand the detail block.</p> <p><b>Resolution:</b> Corrected by adjusting the calc method library to store/retrieve data correctly when the block is collapsed and re-expanded.</p>
PFB-08202 - GlobalSum CM on Stat_Rev has formula error in columns CL:CN [TFS 40489]	<p><b>Issue:</b> In the GlobalSum calc method of the Stat_Rev tab, the formulas in columns CL:CN incorrectly reference row 73.</p> <p><b>Resolution:</b> Corrected by updating the formulas to reference row 75, which contains text that matches the column names in the GlobalSum driver.</p>
PFB-08215 - Add New Employee CM on EMPLOYEE tab contain incorrect array reference [TFS 40382]	<p><b>Issue:</b> When a user adds a new employee to the Employee tab (Add New Employee calc method), the system does not reflect the merit increase amount from the Labor Rates driver and Empl_List sheet.</p> <p><b>Resolution:</b> Corrected by updating the formula in column CP.</p>
PFB-08220 - URGENT: Initiatives Profile is not bringing in profile of accounts [TFS 40402]	<p><b>Issue:</b> The following issues were discovered for initiatives:</p> <ul style="list-style-type: none"> <li>• When inserting a project initiative, the profile of accounts does not populate even though the Preview Query displays the listing.</li> <li>• After the accounts populate, the Acct and Acct.Desc do not populate</li> </ul> <p><b>Resolution:</b> Corrected by updating the Control Sheet and adjusting the formula in the appropriate AQ.</p>

Issue	Description
PFB-08236 - Employee tab Add New Employee block does not calc Dollars [TFS 40577]	<p><b>Issue:</b> When using the Employee Labor method and adding new employee(s) to a new block, the rate now propagates down to the FTE allocation section of the block and will not produce dollars. However, it will produce hours.</p> <p><b>Resolution:</b> Corrected by updating the formulas in column H of the Jobcode calc method.</p>
PFB-08261 - Jobcode tab (and other labor tabs): Manual Inserting Jobcode block does not return JOBCODE.StdHours in column FW [TFS 40799]	<p><b>Issue:</b> When manually inserting a Jobcode, the Standard Hours look up to the Jobcode dimension uses the "Default" option even when configured for the "2080 Hours" option.</p> <p><b>Resolution:</b> AQ field def includes dimension columns for JobCode. If the record is changed, common workflow is to close and reopen the plan file. Former approach included GetData. To meet the demand of the common workflow, converted AQs to refresh on open along with conditional time stamp feature.</p>
PFB-08254 - ProviderComp can't add a provider outside of Budget Group [TFS 40649]	<p><b>Issue:</b> Prior to 2019.3 the client could enter any provider to ProviderComp regardless of Provider.BudgetGroup status. But in 2019.3 we added a BudgetGroup filter to AQ7: Provider List on the Drivers. This is a new AQ that brings Provider List data into the plan file for all providers matching the plan file budget group. However, when the user adds a provider to Provider Comp outside the plan file's budget group, the salary method is not correct and defaults to Salary incorrectly.</p> <p><b>Resolution:</b> DEPT.BudgetType is not connected to Provider.BudgetType. Due to the disconnect, Providers not connected to the single DEPT.BudgetType approach do not populate in Provider. The new approach brings in the same list of providers as ProviderComp into Drivers!AQ7. Data from the Budget_ProviderList driver is still updated when new providers are added.</p>
PFB-08257 - Totals at top of Jobcode tab do not update/adjust for new job code [TFS 40830]	<p><b>Issue:</b> When adding a new job code on the Jobcode tab, the dollars and hours flow over to the Expense tab, but the totals for FTEs, Hours, etc. at the top of the Jobcode tab (Summary section) do not update. This causes a mismatch between the Expense and Jobcode tab.</p> <p><b>Resolution:</b> Corrected by identifying ranges in the Summary section that required increase to row 181 to capture add new and totals.</p>



Issue	Description
JobCode holiday CM is referencing incorrect columns [TFS 37601]	<p><b>Issue:</b> When using the Jobcode tab and the Holiday calc method, the dollars are incorrectly calculated due to an incorrect column reference.</p> <p><b>Resolution:</b> Corrected by updating the Holiday calc method in columns AT:BE for the monthly dollars to lock the range reference to column M.</p>
Jobcode tab is NOT picking up manager input for driver stats [TFS 39328]	<p><b>Issue:</b> The Jobcode sheet does not include manager input for driver stats.</p> <p><b>Resolution:</b> Corrected by reintroducing the manager input column from 2019.2.</p>
Expense tab: Formatting on various views is incorrect [TFS 39348]	<p><b>Issue:</b> The formatting of the blue box surrounding some columns displays intermittent white borders across rows.</p> <p><b>Resolution:</b> Corrected by removing white borders on the Expense tab and Expense calc method rows.</p>
Staffing Tab - Dept Other Pay section is missing CM options [TFS 39361]	<p><b>Issue:</b> When adding a row to the Dept Other Pay section, the system does not display calc methods to select. Users should expect to see the same available calc methods when adding a department in the Other Pay section of the other labor tabs.</p> <p><b>Resolution:</b> Corrected by adding the following calc methods to labor sheets:</p> <ul style="list-style-type: none"> <li>• JobCode tab - Added New PayType calc method</li> <li>• Employee tab - Added New Dept PayType calc method</li> <li>• Staffing tab - Added New PayType calc method</li> </ul>
ProviderDetail: CM Refresh Variable states the FinClass (or Location based on the driver setting) refresh variable is optional but retrieves incorrect default [TFS 39519]	<p><b>Issue:</b> The refresh variable option in calc method is not based on the driver setting.</p> <p><b>Resolution:</b> Corrected by updating refresh variable to point to the correct FINCLASS or LOCATION element.</p>
ProviderSummary: Volume on summary tab does not match in month 12 [TFS 39831]	<p><b>Issue:</b> Now that the twelfth month is editable, a situation can occur where a change in the amt adjustment may not tie to the sum of the twelve months if a user makes manual changes to the default formulas.</p> <p><b>Resolution:</b> Corrected by updating the logic in the twelfth month to be read-only and used as the balancing month to annual total.</p>

Issue	Description
Employee tab: EPTO row is unexpectedly hidden [TFS 39832]	<p><b>Issue:</b> On the Employee tab, the EPTO row is hidden.</p> <p><b>Resolution:</b> Corrected by fixing formula reference error for hide logic.</p>
Stat_Rev: CP to BP Integration issues [TFS 39945]	<p><b>Issue:</b> The first instance of the calc method is missing comments in each section.</p> <p><b>Resolution:</b> Corrected by identifying integrated records rolling-up or merging with historical records. Created a new AQ for BUDYYYY records and user changes.</p>

## Utilities

Issue	Description
PFB-07242 - Salaries Do Not Match: Issues bucket [TFS 39918]	<p><b>Issue:</b> This report includes the following issues:</p> <ul style="list-style-type: none"> <li>The report needs a refresh variable to filter by Budget Group or Entity</li> <li>Budget Interface to Labor worksheet only pulls in CY Actual YTD and CY Budget Total (Staffing is the only labor tab that uses LYA data).</li> <li>Make various changes to AQ1-AQ3.</li> </ul> <p><b>Resolution:</b> Corrected by making multiple changes to the Variables tab and other formula changes.</p>
PFB-08040 - New Department Utility Missing Save Tags [TFS 39792]	<p><b>Issue:</b> The IF function found in cell P7 of the Jobcode sheet that returns [Save] tags needs to be copied to cells P8-P11. Currently, the other job code selections do not save.</p> <p><b>Resolution:</b> Corrected by changing cells P8:P11 to match the formula in cell P7.</p>

## Workbooks

Issue	Description
Expense tab: Duplicate records inserted when plan files with CP integration data rebuilt [TFS 39868]	<p><b>Issue:</b> When a plan file includes Axiom Capital Planning integration data and the plan file is rebuilt, the system inserts duplicate integration records on the Expense tab</p> <p><b>Resolution:</b> Corrected by creating a new AQ to distinguish Axiom Capital Planning records in the BUDYYYY table by initiative ID.</p>

Issue	Description
ProviderComp: Formula resolves to OTotal at ProviderComp!D103 which causes some rare matching issues on the Provider Volume Tab [TFS 39940]	<p><b>Issue:</b> If a provider existed on the Provider Detail tab but not on ProviderComp tab, the FTE default of Relative Availability was not being used.</p> <p><b>Resolution:</b> Corrected so that Relative Availability is used if the system does not find a match in ProviderComp.</p>

## Report updates

### Budgeting Utilities

Location	Description
\Axiom\Reports Library\Budgeting Utilities\Budget Reconciliation\Reconcile Payroll12 to Financial-Hours.xlsx	<p><b>Issue:</b> PFB-08039 - BP Reconcile Payroll12 to Financial-Hours does not Have Quick Filter [TFS 39790]</p> <p><b>Symptom:</b> The Reconcile Payroll12 to Financial-Hour report does not allow for Quick Filter. This is extremely helpful when dealing with enterprise clients who may have thousands of departments to evaluate and only want to review a sub-set of the total.</p> <p><b>Resolution:</b> Corrected by enabling Quick Filter for this report.</p>

### Imports

Issue	Description
\Axiom\Imports Library\Management Reporting\07-Load Materials Issues.axi \Axiom\Imports Library\Management Reporting\08-Load Accrued Receipts.axi	<p><b>Issue:</b> PFB-08080 - Transaction Import Transform Order in Import 7 and 8 in Management Reporting Standard Imports [TFS 40560]</p> <p><b>Symptom:</b> The transaction imports (e.g. Load Materials Issue) deletes all source records based on the current transform order. The transforms that set the account type and delete non-expense accounts based on account occur before the transform that sets the account. Since the ACCT column in the temp table would be empty, all records are deleted.</p> <p><b>Resolution:</b> Corrected by moving the account creation step to the second step to create the account before the delete step in temp table.</p>

## Income Statement Builder

Issue	Description
PFB-07727 - Orphan records in IS template builder [TFS 36854]	<p><b>Symptom:</b> The Income Statement Builder leaves orphan records in the template when the custom column that houses the Income Statement category of the client is updated.</p> <p><b>Resolution:</b> Corrected by identifying and applying logic enhancements to mitigate and filter orphan records.</p>

## Management Reporting - Analysis

Location	Description
Axiom\Reports Library\Management Reporting\Analysis\Key Dept Ratios.xlsx	<p><b>Issue:</b> PFB-08115 - Key Dept Ratios: Formula used in Salary Variance due to Pay Rates [TFS 40566]</p> <p><b>Symptom:</b> The formula for Salary Variance due to Pay Rates in the Key Dept Ratios report appears incorrect.</p> <p><b>Resolution:</b> Corrected by changing the formula on cell S68-Salary Variance Due to Pay rates. The total salary variance is now equal to the total of variances caused by rate, volume, efficiency.</p>
	<p><b>Issue:</b> PFB-08004 - Key Dept Ratios Volume Var formula error [TFS 40554]</p> <p><b>Symptom:</b> The revenue variance due to volume should be the same percentage as the variance percentage for Total Key Statistics. Issue was that Actual Revenue per unit was being used instead of Budget Revenue per unit.</p> <p><b>Resolution:</b> Corrected by doing the following:</p> <ul style="list-style-type: none"><li>• Adjusted the formula in Revenue Variance Due to Volume.</li><li>• Changed column K and P to use the budget per unit, not actual.</li><li>• Changed the formulas to use columns J and O in the formula.</li><li>• Changed the refresh variables type to use Grid instead ColumnValue.</li><li>• Modified the refresh variable relatedcolumnvalue to be RPTMap compliant.</li></ul>

Location	Description
\Axiom\Reports Library\Management Reporting\Analysis\Labor Summary by Department.xlsx	<p><b>Issue:</b> PFB-08178 - Labor Summary by Department: Header not refreshing correctly [TFS 40571]</p> <p><b>Symptom:</b> The period data in the report header does not refresh correctly when the user selects refresh variables.</p> <p><b>Resolution:</b> Corrected by doing the following:</p> <ul style="list-style-type: none"> <li>• Changed the data lookup formula to refresh on open in the Variables tab, cell J48.</li> <li>• Increased the font size on the Instructions tab to make it easier to read.</li> <li>• Changed the Default View on Open to ReportView.</li> </ul>

## Management Reporting - Report Packages

Location	Description
\Axiom\Reports Library\Management Reporting\Report Packages\Manager\Dept Monthly Package.xlsx, EmpID tab.  Axiom\Reports Library\Management Reporting\Report Packages\Manager\Dept Monthly Package.xlsx \Axiom\Reports Library\Management Reporting\Report Packages\Manager\Pay By Employee ID.xlsx	<p><b>Issue:</b> PFB-06875 - Dept Monthly Package: Employee name is blank if the employee changed depts [TFS 29730]</p> <p><b>Symptom:</b> When a user has a fiscal year-end and they run this report if an employee changed departments, the employee name returns blank because the primary table is the current year and the employee ID does not show on that year but does for the prior.</p> <p><b>Resolution:</b> Corrected by changing the logic to look at the current year. If the system does not find a name, it looks to the prior year. If both are blank, the system returns the message "Name Not Found".</p>
\Axiom\Reports Library\Management Reporting\Report Packages\Manager\Budget Variance By Dept.xlsx	<p><b>Issue:</b> PFB-07768 - Budget Variance by Dept - TotOpExp row Formatting [TFS 37083]</p> <p><b>Symptom:</b> The formatting of the row "Total Operating Expenses" should be consistent with the other subtotal rows.</p> <p><b>Resolution:</b> Corrected by formatting the Total Operating Expenses row to match the detail rows.</p>

Location	Description
\Axiom\Reports Library\Management Reporting\Report Packages\Executive\Dept Variance Rollup	<p><b>Issue:</b> PFB-07904 - Dept Variance Roll Up has a typo for Outpatient revenue [TFS 37991]</p> <p><b>Symptom:</b> The word revenue is missing an 'n' in outpatient revenue in the Department Variance Roll up report located under Management Reporting\Report Packages\Executive\Dept Variance Rollup.</p> <p><b>Resolution:</b> Corrected by updating the label spelling.</p>
\Axiom\Reports Library\Management Reporting\Report Packages\Manager\Dept Monthly Package	<p><b>Issue:</b> PFB-07922 - Dept Monthly Package Total FTE Calc should be <math>S46/(80 * \\$R\\$5)</math> [TFS 38229]</p> <p><b>Symptom:</b> The Total FTEs calculation on the EmpID sheet under the YTD column (column S) divides the total hours by 80. This should divide by 80 times number of pay periods.</p> <p><b>Resolution:</b> Corrected by updating the formula in cell S47 to include the number of pay periods.</p>
Reports Library\Management Reporting\Report Packages\Executive\Executive Monthly Package	<p><b>Issue:</b> PFB-08112 - Used range on BVSUM tab in Executive Monthly Package report goes to column XFD [TFS 40564]</p> <p><b>Symptom:</b> In the Executive Monthly Package report, the Excel "used range" on the BVSUM tab extends to column XFD. This can cause an "HRESULT" error when running the report.</p> <p><b>Resolution:</b> Corrected by resetting the used range on BVSum tab to remove the unused columns.</p>

## Management Reporting - Payroll

Location	Description
\Axiom\Reports Library\Management Reporting\Payroll\Labor Distribution Detail.xlsx	<p><b>Issue:</b> PFB-06758 - Labor Distribution Detail report the employee's name will not appear [TFS 29847]</p> <p><b>Symptom:</b> Within the Jobcode block of the Labor Distribution Detail report, the employee's name does not display when the following criteria is met:</p> <ol style="list-style-type: none"> <li>1. The FY cross over pay periods with both PY and CY periods display and</li> <li>2. The employee has PY data to create the row but does not yet have any CY data.</li> </ol> <p><b>Resolution:</b> Corrected by adding columns to look up the name for current and prior fiscal year tables as well as added logic in the name formula to look for both. If it does not exist, the system will display a "No Name found" message.</p>

## Management Reporting - Variance Comments

Location	Description
\Axiom\Reports Library\Management Reporting\Variance Comments\Comment Input\MultiDept Variance.xlsx	<p><b>Issue:</b> PFB-08263 - Unable to save MultiDept Var due to incorrect logic in columns BD &amp; BE [TFS 40833]</p> <p><b>Symptom:</b> When using the MultiDept Variance Report and summary accounts are employed, the system displays an error in column BF when the user saves the report.</p> <p><b>Resolution:</b> Corrected by adjusting the logic for YTD to always populate. This logic exists in columns BK and BL to populate field definition versions of YTD for LY or CY, otherwise for summary data, it utilizes GetData with the FSSummary filter.</p>
	<p><b>Issue:</b> PFB-08276 - MultiDept Variance title row is not dynamic [TFS 40874]</p> <p><b>Symptom:</b> In the MultiDept Variance report, the variance flags are hard coded.</p> <p><b>Resolution:</b> Corrected by removing alert flag indicators similar to Executive Monthly Package &gt; Variance Overview report.</p>

## Management Reporting Utilities - Payroll

Location	Description
\Axiom\Reports Library\Management Reporting Utilities\Payroll\BiWeekly to Monthly with LY.xlsx	<p><b>Issue:</b> BiWeekly to Monthly with LY.xlsx incorrectly treating the Paytype.Accrual=No paytypes [TFS 39835]</p> <p><b>Symptom:</b> The BiWeekly to Monthly with LY.xlsx incorrectly ignores the pay types where Paytype.Accrual=No. This filter should be Paytype.Accrual&lt;&gt;NA as a sheet filter. Where Paytype.Accrual=No, the system should record the value in the month where the pay type is posted in the Payroll27 table.</p> <p><b>Resolution:</b> Corrected by updating the Sheet filter on Control Sheet in cell J66 to use Paytype.Accrue&lt;&gt;'NA' and to dynamically include Paytype.FTE='Yes' when selected for Hours.</p>
	<p><b>Issue:</b> Biweekly to Monthly incorrectly treating the Paytype.Accrual=No paytypes [TFS 39836]</p> <p><b>Symptom:</b> The BiWeekly to Monthly.xlsx incorrectly ignores the pay types where Paytype.Accrual=No. This filter should be Paytype.Accrual&lt;&gt;NA as a sheet filter. Where Paytype.Accrual=No, the system should record the value in the month where the pay type is posted in the Payroll27 table.</p> <p><b>Resolution:</b> Corrected by updating the Sheet filter on Control Sheet in cell J66 to use Paytype.Accrue&lt;&gt;'NA' and to dynamically include Paytype.FTE='Yes' when selected for Hours.</p>
\Axiom\Reports Library\Management Reporting Utilities\Payroll	<p><b>Issue:</b> PFB-07584 - Monthly to GL has new PAYTYPE.Provider column [TFS 35703]</p> <p><b>Symptom:</b> The report errors out upon open for invalid column PAYTYPE.Provider in non-provider licensed systems.</p> <p><b>Resolution:</b> Corrected cell AE4 to check for a Provider license. If the license is present, the system will use PayType.Provider. If the license does not exist, the cell remains blank with no field definition.</p>



Location	Description
\Axiom\Reports Library\Management Reporting\Payroll\Labor Distribution Detail.xlsx	<p><b>Issue:</b> PFB-07672 - Labor Distribution Detail sheet filter is incorrect [TFS 37709]</p> <p><b>Symptom:</b> In the Labor Distribution Detail report, the refresh variable is for DEPT.RptMap, but the sheet filter that refers to the user's selection uses DEPT.DEPT. Therefore, when the user refreshes the report, the system displays data for only one department that belongs to the RptMap grouping.</p> <p><b>Resolution:</b> Corrected by updating the formula in cell J66 in the control sheet of the report.</p>

### Management Reporting Utilities - Dimension System Structure Reports

Location	Description
\Axiom\Reports Library\Management Reporting Utilities\Dimension System Structure Reports\System Structure Accounts.xlsx	<p><b>Issue:</b> PFB-06267 - System Structure Accounts SumBy Issue [TFS 29746]</p> <p><b>Symptom:</b> The System Structure Accounts report includes a SumBy for every AQ that prevents all of the accounts for each section of the report from pulling in.</p> <p><b>Resolution:</b> Corrected by changing the Sumbys in all the AQs to Acct.Acct.</p>

### Productivity Reporting - BiWeekly Productivity

Location	Description
\Axiom\Reports Library\Productivity Reporting\BiWeekly Productivity\Department\Productivity Pay By Employee ID.xlsx	<a href="#">See PFB-06875</a>
\Axiom\Reports Library\Productivity Reporting\BiWeekly Productivity\Department\Prod Detail Hours By JobCode.xlsx	<p><b>Issue:</b> PFB-07574 - Productivity Reports - Prod Detail Hours by JobCode [TFS 37078]</p> <p><b>Symptom:</b> In cell T6, the OR statement at the beginning of the formula means that if budget or target is zero, the result will always be zero. If a user does not have a target, even if there is budget, the result is always zero. The IF needs to go with each statement within the original IF statement.</p> <p><b>Resolution:</b> Corrected by updating the formula with an IF statement in cell T6.</p>

Location	Description
Axiom\Reports Library\Productivity Reporting\BiWeekly Productivity\VarianceComments\ProductivityExecReview	<p><b>Issue:</b> PFB-07920 - ProductivityExecReview Rpt does not include Paytype.PayDetail="Other' Hr/Dllrs [TFS 38228]</p> <p><b>Symptom:</b> When using the ProductivityExec Review report to compare against the ProductivityVCC report for the Productivity Index, the two may not match because the ProductivityVCC report includes Paytype.PayDetail = 'Other' for Hours and Dollars while the ProductivityExec report does not. It does include Regular and Contract as the ProductivityVCC report does.</p> <p><b>Resolution:</b> Corrected by adding column to act hours, act dollars, bud hours, bud dollars to account for PayType.PayDetail=Other. We then added these new columns to the calculation of actual and target productivity index and labor rate. This now matches the ProductivityVCC report.</p>
Axiom\Reports Library\Productivity Reporting\BiWeekly Productivity\Department\Prod Detail Hours By JobCode.xlsx	<p><b>Issue:</b> PFB-07937 - Prod Detail Hours By JobCode Formula Issue [TFS 38225]</p> <p><b>Symptom:</b> The current formula in cell T6 is using the OR argument comparing YTD Actuals and CM Target. So where there is YTD data but no data for CM Target, the argument is true thereby making the YTD Index calc zero when it should be using the YTD values. The AND argument will correct this logic error.</p> <p><b>Resolution:</b> Updated the formula in cell T6 to use the AND argument.</p>
\Axiom\Reports Library\Productivity Reporting\BiWeekly Productivity\Variance Comments\ProductivityVCC	<p><b>Issue:</b> PFB-07954 - Productivity VCC Report Prod Index Graph shows inaccurate results [TFS 38259]</p> <p><b>Symptom:</b> The productivity index graph in the ProductivityVCC report shows inaccurate results.</p> <p><b>Resolution:</b> Corrected by updating the formula in cells L13:Q13 to reference correct columns.</p>

Location	Description
\Axiom\Reports Library\Productivity Reporting\BiWeekly Productivity\Executive\Productivity Performance-Hours	<p><b>Issue:</b> PFB-07987 - Productivity Performance - Hours refresh variable needs to clear on save [TFS 38659]</p> <p><b>Symptom:</b> Now that the report opens up read-only, a user cannot save the variables, however we should make sure the setting is set to clear in our standard reports.</p> <p><b>Resolution:</b> Corrected by changing the Clear Selected value on open and save to True for the Year and Period on the refresh variables on the Variables tab.</p>

## System Files

Location	Description
\Axiom\Reports Library\System Files\IncomeStmt Drills\KHA_Drill03Transaction.xlsx  \Axiom\Reports Library\System Files\IncomeStmt Drills\KHA_Drill09JE.xlsx	<p><b>Issue:</b>PFB-07802 - Income Statement drills have non-functional Excel filters [TFS 37359]</p> <p><b>Symptom:</b> The Income Statement drill reports KHA_Drill03Transaction.xlsx and KHA_Drill09JE.xlsx come with column filters enabled. However, these column filters are non-functional in Windows client because there is an empty row between the column headers and the data.</p> <p><b>Resolution:</b> Corrected by updating the location of the Start/Stop tags on the drill reports to remove the empty row causing the issue.</p>

# Issues resolved in 2019.4.1

The following tables list the resolutions for issues addressed in 2019.4.1, released on January 27th, 2020:

## Driver, template, calc method, and other updates

### Calc Methods

Issue	Description
PFB-08406 - URGENT: Unable to adjust Gross Charges for New/Exst Provider in Mgr Input Column [TFS 42250]	<p><b>Issue:</b> In 2019.3, when using the Provider Detail method and adding new providers to a plan file using the Add New Provider utility, users cannot adjust Gross Revenue (no blue input cell) for the current year in the Manager Input column, which was allowed a few versions ago. This is problematic because it does not allow for additional adjustments on existing or new providers.</p> <p><b>Resolution:</b> Corrected by updating the Revenue calc method to allow for Budget Users to edit the Manager Input column. When a user clicks "Double Click to Insert New Revenue," the revenue logic now includes the editable blue cell in the Manager Input column.</p> <p><b>NOTE:</b> Because the Revenue calc methods have been updated, ALL interfaced and added providers will include the editable field. The change will be effective upon the next recalculation or upon the expand/collapse of an individual provider or all providers.</p>

## File Groups

Issue	Description
Plan files are built out for departments that are set up as KHABgtTemplate=NoBudget, which is unexpected [TFS 42170]	<p><b>Issue:</b> Plan file processing and recalculations may be unexpectedly longer than in previous versions because of plan files created that were not created in prior versions. In the 2019.3 and 2019.4 versions, the text "KHABgtTemplate" was removed from the file group Properties &gt; Template Options field. As a result, the system now builds plan files that were not intended to be built when the "ShowOnList_Budgeting" is set to True in the DEPT dimension even though "NoBudget" was selected in Dept.TplOptions.</p> <p><b>Resolution:</b> Corrected by changing the setting for the prototype file group from "None" to "KHABgtTemplate." While it is still good practice for administrators to review the "ShowOnList_Budgeting" column in the DEPT dimension, the reverting of the "KHABgtTemplate" text will now recognize when any department is set to "NoBudget" and will not build a plan file.</p>

## Templates

Issue	Description
PFB-08311 - URGENT: Incorrect Dept used in column CK/CL of Staffing Tab for Dollar Paytypes [TFS 42393]	<p><b>Issue:</b> On the Staffing tab, when using KHABGTMap departments, dollar-only pay types on these job code blocks may not show the correct department (shows KHABGTCode Dept), thus preventing the flow of data to the Expense tab if the account is different than the home department. This may create an out-of-balance condition in the workbook between the Expense and Staffing tab as well as inaccurate financial reporting.</p> <p><b>Resolution:</b> Corrected by adjusting the department reference to identify the DEPT.KHABgtMap for each line identified in column EW.</p>

## Report updates

No issues were addressed in this release.

# Issues resolved in 2019.4.2

The following tables list the resolutions for issues addressed in 2019.4.2, released on February 10th, 2020:

## Driver, template, calc method, and other non-report items

### Calc Methods

Issue	Description
PFB-08425 - CYB Detail Description does not come into budget workbooks [TFS 42917]	<p><b>Issue:</b> In the budget workbook, users can include the current year's budget detail information from the last completed budget. In the 2019.3 version, however, the system brings over the budget amounts but not the description for RedcordIDDesc and BudComments.</p> <p><b>Resolution:</b> Corrected by adding two field definitions (RecordIDDesc and BudComments) in the field definition row so that the values entered from prior budget year will be included in the plan file.</p>

### Templates

Issue	Description
PFB-08358 - Contract Provider Labor not Flowing to Expense tab [TFS 43142]	<p><b>Issue:</b> In 2019.3, the Contract Provider lines in the ProviderComp tab &gt; Provider section of the budget plan file do not flow over to the Expense tab for the corresponding dollars and hours accounts listed in columns CK and CL. These lines flow to the ProviderCompData tab for account zero, which the Expense tab will not pick up.</p> <p><b>Resolution:</b> Corrected by adding the needed save-to-database fields for Dollars and Hours that concatenate the needed dept+acct string to pass the Expense tab.</p>

## Report updates

No issues were addressed in this release.

# Issues resolved in 2019.4.3

The following tables list the resolutions for issues addressed in 2019.4.3, released on March 9th, 2020:

## Driver, template, calc method, and other non-report items

### Templates

Issue	Description
PFB-08431 - URGENT: Paytypes for Global Benefits not being reflected in Col DN of PComp tab [TFS 43776]	<b>Issue:</b> In 2019.4, the logic to show the proper pay type for Global Benefit lines on the PComp tab is broken. <b>Resolution:</b> Corrected by updating the filter logic in AQ9.
PFB-08446 - Calendar Day dec in Budget Method incorrect [TFS 42916]	<b>Issue:</b> The Expense sheet references a blank cell in the StatRev sheet, so the default label will always display Calendar Days. <b>Resolution:</b> Corrected by updating the Expense sheet to reference the total statistics line on the StatRev sheet.
PFB-08500 - AQ1 not active for ProviderSum Tab [TFS 43668]	<b>Issue:</b> In 2019.3, AQ1 on the ProviderSummary sheet is hardcoded incorrectly, so the system does not bring in the current settings from the Provider Config Driver. <b>Resolution:</b> When separating the PFP_template Provider from the Master template, ProviderSummary!AQ1 was accidentally deactivated. Corrected by activating the AQ.
PFB-08510 - When adding a new job code block to a plan file, the user saves, closes, and upon re-opening the plan file, the new job code is duplicated [TFS 43792]	<b>Issue:</b> When adding a new job code block to a plan file, the user saves, closes, and upon re-opening the plan file, the new job code is listed twice. <b>Resolution:</b> When adding a duplicate job code, the system will display the duplicate in the sheet. The duplicate does not save to the database, however, to remove it from the sheet you will need to either rebuild the plan file or manually delete it from the sheet.

Issue	Description
PFB-08516 - GL Account from Jobcode table not picked up on new job codes [TFS 43793]	<p><b>Issue:</b> In 2019.3, the lookup logic was modified to pull in GL account information into the JobCode sheet. If you do not use the PayrollGLMapping table or Paytype table for GL Accounts, when manually adding a job code on the JobCode sheet or setting the NYBKHA column in the ActPay27 table to 1 to interface in, the system does not bring in the account from the JobCode table. As a result, dollars and hours cannot flow to the Expense sheet.</p> <p><b>Resolution:</b> Corrected by requiring new JobCode blocks to include similar field values as the interfaced JobCode blocks.</p>
PFB-08532 - Urgent: Provider List Driver - Global Salary [TFS 43817]	<p><b>Issue:</b> In the Provider Comp block for the 10 Global Benefit rows, each row includes the option to use FTE as the allocation method in which to allocate the total annual benefit expense to each month. The FTE row is located in one constant for each block. The error occurs in the Global Benefit rows 2-10 where the formulas do not refer to the same constant FTE row. This causes columns KP: KY to either calculate incorrect values or zero.</p> <p><b>Resolution:</b> Corrected by updating the formulas KP:KY in the Provider Comp and Add New Provider calc methods.</p>

## Workbooks

Issue	Description
PFB-08560 - Add New ProviderComp not updating to Expense tab (PayrollGLMapping) [TFS 43954]	<p><b>Issue:</b> The salary for a new provider only displays on the Expense sheet after the user re-opens and saves the ProviderComp sheet.</p> <p><b>Resolution:</b> Corrected by implementing similar logic from ProviderComp calc method to the Add New Provider calc method for columns IH, IJ-IK, IX, and IW.</p>

## Report updates

No issues were addressed in this release.



# Issues resolved in 2019.4.4

The following tables list the resolutions for issues addressed in 2019.4.4, released on May 12th, 2020:

## Driver, template, calc method, and other non-report items

### Calc Methods

Issue	Description
PFB-08268 - Jobcode calc method contains formula logic in column J, row 14 [TFS 40834]	<p><b>Issue:</b> The logic error is that the value of the denominator for (PTO Alloc % for YTD) occurs at the beginning of the formula when the division calculation is 4 embedded IF-THEN conditions. If the denominator is zero, but the logic doesn't result in the associated calculation, then the result is erroneously zero and will not recognize any PTO configurations from the Labor Override driver.</p> <p><b>Resolution:</b> Corrected by updating the test for IF YTD PTO=0 to the correct section of the formula.</p>
PFB-08403 - Incorrect formula for hours on row 1 of New Jobcode on Staffing tab [TFS 42165]	<p><b>Issue:</b> In the Staffing tab, the total hours for each month on row 1 of the Add New Jobcode calc method includes misplaced parentheses that causes the calculated hours for each pay type row to be less than they should be. This impacts variable job codes, as the total hours for the budget months do not tie to the annual paid hours section of each job code for the Staffing tab. This leads to understated hours on the Expense tab.</p> <p><b>Resolution:</b> In the Add New JobCode Block calc method, corrected by adjusting the formula so that the FTEs by row are no longer being reduced by the formula error within the Hours columns.</p>

Issue	Description
<p>PFB-08406 - Unable to adjust Gross Charges for new/exst provider in Mgr Input Column [TFS 42395]</p>	<p><b>Issue:</b> In 2019.3 when adding new providers to a plan file, users can no longer adjust Gross Revenue (no blue input cell) for the current year in the Manager Input column, which was an available functionality several versions ago. The logic in this field is similar to the Existing Provider "Manager Input logic" where it uses the (YTD Gross Charges / YTD of the chosen driver from the drop-down) multiplies by the Manager Input value of the chosen driver to calculate your gross charge adjustment. While this works in one case for existing providers, its problematic as it does not allow for additional adjustment on existing or new providers (they have zero YTD).</p> <p><b>Resolution:</b> Corrected the Revenue calc method by reinstating the same update as the original calc methods. Changes were made to the cells in columns L, FK, and GE for the one line Revenue calc method.</p>
<p>PFB-08425 - CYB Detail Description does not come into budget workbooks [TFS 42465]</p>	<p><b>Issue:</b> In the budget workbook, users can include the current year's budget detail information from the last completed budget. In the 2019.3 version, however, the system brings over the budget amounts but not the description for RedcordIDDesc and BudComments.</p> <p><b>Resolution:</b> Corrected by adding fields for the two prior years (RecordIDDesc and BudComments) in the field definition row so that the text comments entered from prior budget year will be included in the plan file.</p>
<p>PFB-08427 - Incorrect job code description on the Jobcodes tab for KHABGTcoded Jobcodes</p>	<p><b>Issue:</b> With the changes in 2019.3 for plan files, an issue occurs when you roll up job codes together using the KHABGTcode column. The system picks up the description of one of the higher-numbered job codes since now the system uses an AQ to bring in that data versus a using GetData.</p> <p><b>Resolution:</b> Corrected by updating the formula for the description to use Jobcode.KHABgtCode.Description.</p>

Issue	Description
PFB-08476 - Incorrect Stat Reference logic on the ProviderComp tab for CYB,YTD, RemProj [TFS 43369]	<p><b>Issue:</b> With the separation of the ProviderDetail and ProviderSummary logic (starting in 2019.3), the stat referencing formulas on the first line of the PComp block on the ProviderComp tab for CYB, YTD, and Remaining Projected were not correctly updated . If you elect to use a stat that is not the driving stat, the system correctly picks it up for the budget months, but not CYB, YTD , and Remaining Projected.</p> <p><b>Resolution:</b> Corrected by adjusting the calc method library formulas to identify driver setup for ProviderDetail or ProviderSummary and bring in the correct stat value if configured for a non-driver statistic. (ie...WRVUs may be the driver stat but provider comp is using Encounters).</p>
PFB-08446 - Calendar Day description in Budget Method incorrect [TFS 44065]	<p><b>Issue:</b> In cell T87 on Expense tab, the description defaults to Calendar Days because of a cell formula error that looks to a blank cell on the Stat_Rev tab.</p> <p><b>Resolution:</b> Corrected by updating the formula so that "Total Key Statistic" is the description when dept statistics are used.</p>
PFB-08607 - When an Initiative is added to a plan file, a recalculation causes a duplicate [TFS 46716]	<p><b>Issue:</b> The Patient Revenue calc method may duplicate a row after recalc. The issue is due to a formula error in the rebuild key column for this calc method.</p> <p><b>Resolution:</b> Corrected by updating the rebuild logic on row 3 of the calc method.</p>

## Drivers

Issue	Description
Budget Provider Driver: Errors upon save due to the length of the department description [TFS 38578]	<p><b>Issue:</b> The provider driver department description is len(50), while the department dimension description is len(100). The difference causes a save error and prevents the driver from saving.</p> <p><b>Resolution:</b> Corrected by increasing the description field length to 100.</p>
PFB-08065 - Driver 12 Budget Revenue GlobalRevenue header displays "Account Description" while it contains Acct and Dept descriptions [TFS 39795]	<p><b>Issue:</b> The definition in Column S is Dept.KHABgtMap.Description, but row 46 description displays "Account Description" when it should display "Description".</p> <p><b>Resolution:</b> Corrected by changing "Account Description" to "Description".</p>

Issue	Description
PFB-08130 - Provider - VolSum produces incorrect results for YTD [TFS 40478]	<p><b>Issue:</b> When bringing in the YTD volume for the provider, the Field Definition Row is set to pull in YTD and this can change during the budget process if a second save needs to occur due to volume changes. Cell N27 should be referencing the Variables tab and cell 11 for the Budget YTD period.</p> <p><b>Resolution:</b> When bringing in the YTD volume for the provider, the Field Definition Row is set to pull in YTD and this can change during the budget process if a second save needs to occur due to volume changes. Cell N27 now references the Variables tab and cell 11 for the Budget YTD period. This replaces using the system YTD, which can change over the budget period. The second issue was corrected for the Rem Volume column by deleting the formula in O25 so that it uses the calculation in O26 instead, which takes the total minus YTD to get the projection versus using ProjCalc.</p>
PFB-08288 - Labor Config: NotUsed in Paytype column [TFS 41087]	<p><b>Issue:</b> The new data validation for Jobcode and Paytype do not allow for NotUsed as an option unless the driver is unprotected and it is manually entered. This is problematic because all the Hide Row logic in the plan file is looking for NotUsed in the Paytype column to determine if a row should be Visible or Hidden. This would not be an issue for a client with a rolled over File Group that had NotUsed previously listed, but any new system or changes would be problematic as most clients do not have the access to overwrite like that.</p> <p><b>Resolution:</b> Corrected by updating the picklists to select 'NotUsed' as an option.</p>
PFB-08287 - Labor Config: Lump sum payout missing desc [TFS 41088]	<p><b>Issue:</b> The new format of Labor Config no longer includes a description for the Lump Sum Payout line. As a result, it now displays in the plan file with a zero instead of a description.</p> <p><b>Resolution:</b> Corrected by updating cell Q83 to be an input cell in the Labor Configuration tab.</p>
PFB-08360 - 02 Budget Labor Config driver is missing feature that inserted Global section [TFS 41742]	<p><b>Issue:</b> The logic to default a newly inserted budget group to the values in Globals was missing. This was a feature added in 2019.3, which included cell logic that if the current budget group row was blank, then use Global. The driver was inadvertently reverted to a version where this logic was not present.</p> <p><b>Resolution:</b> Corrected by restoring the driver and calc method library from the correct version.</p>

Issue	Description
PFB-08438 - Budget Labor Configuration does not correctly calculate the Global Hours in Period Global Hours Per FTE Convention is "Default" AND the year is a leap year [TFS 43780]	<p><b>Issue:</b> The Budget Labor Configuration driver does not correctly calculate the Global Hours in Period when Global Hours Per FTE Convention is "Default" AND the year is a Leap Year.</p> <p><b>Resolution:</b> Corrected by updating multiple formulas in the Budget Labor Configuration driver and the Budget Group calc method.</p>
PFB-08456 - AQ9 on Budget Statistics driver should filter for selected budget groups [TFS 43782]	<p><b>Issue:</b> When refreshing the Budget Statistics Driver, AQ9 displays a warning that the number of records retrieved exceeds the maximum allowed, even when only one budget group was selected.</p> <p><b>Resolution:</b> Corrected by adjusting the data filter for AQ9 to consider the budget group selected in the refresh variable.</p>
PFB-08455 - Add rounding to ChgPct and VariancePct formulas in Budget Statistics driver [TFS 43783]	<p><b>Issue:</b> The system displays a data conversion error when refreshing the Budget Statistics driver (AQ9) due to large decimal values in the ChgPct column in the table.</p> <p><b>Resolution:</b> Corrected by updating the formula in column AS to include round logic out to 10 decimals. This will prevent the large integer errors caused by division issues of very small values.</p>
PFB-08498 - ProviderList driver does not save all changes due to error in logic in Save tag [TFS 45449]	<p><b>Issue:</b> The system does not save all changes to the Provider List.</p> <p><b>Resolution:</b> Corrected by updating the save logic on the affected rows.</p>
PFB-08585 - Paytype Description on roll ups in Labor Config not correct [TFS 46720]	<p><b>Issue:</b> With the move to 2019.3, the Paytype field for the Prod and Non Prod categories in the Labor Config Driver changed from an input field to a GetDataElement. The issue that shows up is the description for the paytype listed may belong a child pay type of it.</p> <p><b>Resolution:</b> Corrected by concatenating PAYTYPE.JobCode=PAYTYPE.Paytype to all four data sources ,which now brings in the correct description for the category.</p>
Jobcode Description on roll ups in Labor Config not correct [TFS 47020]	<p><b>Issue:</b> In 2019.3, the Jobcode field in the Labor Config Driver changed from an input field to a GetDataElement. The issue that shows up is the incorrect description for the job code listed may belong to a job code that was not the rolled up job code.</p> <p><b>Resolution:</b> Corrected by concatenating Paytype.Paytype PAYTYPE.JobCode=PAYTYPE.Paytype to all four data sources, which now brings in the correct description for the rolled up job code.</p>

## Task Panes

Issue	Description
PFB-08473 - PayrollGLMapping Duplicate in BudAdmin task pane [TFS 43785]	<p><b>Issue:</b> The feature PayrollGLMapping is located in both the Budget System Maintenance and Budget Reporting section of the Bud Admin task pane.</p> <p><b>Resolution:</b> Corrected by removing the duplicate from the Budget System Maintenance section.</p>

## Templates

Issue	Description
PFB-08252 - Jobcode tab: Jobcode Summary calc method does not calculate CYB FTE [TFS 40647]	<p><b>Issue:</b> When using CYB_FTE as the comparison on Jobcode, the new summary section of the Jobcode does not contain the logic to include CYB_FTE.</p> <p><b>Resolution:</b> After identifying that column K calculated "FTE Comparison to YTD", which was derived from the Labor Config driver setting for JobCode and Employee labor tabs, corrected by adjusting the sum logic in total sections for JobCode summary blocks to identify values in details section. The Summary sections utilize logic to retrieve sums of details instead of retrieving values directly from the table with the setup of Axiom UDF ReapplyCurrentViews.</p>
PFB-08311 - Incorrect department used in column CK/CL of Staffing tab for Dollar pay types[TFS 41201]	<p><b>Issue:</b> On the Staffing tab, when employing the use of KHABGTMap depts, dollar only pay types on these job code blocks may not show the correct dept (shows KHABGTCode Dept), thus preventing the flow of the data to the Expense tab if the account happens to be different than the home department. This may create an out of balance condition in the workbook between the Expense and Staffing tab as well as inaccurate financial reporting.</p> <p><b>Resolution:</b> Corrected by adjusting the calc method library formulas in columns CK and CL to look to the dept used for that specific job code versus the host department.</p>

Issue	Description
<p>PFB-08328 - Retirement is not calculating correctly in the JOBCODE calc method [TFS 41843]</p>	<p><b>Issues:</b></p> <ol style="list-style-type: none"> <li>1. On the Jobcode and ProviderComp tabs, YTD Retirement Calculation for salary for the prior year was understated due to not including the per/FTE component.</li> <li>2. On the Jobcode and ProviderComp tabs, the retirement calculation for month 1 of the calendar year may not calculate due to comparing erroneously to YTD of prior year.</li> </ol> <p><b>Resolution:</b></p> <ol style="list-style-type: none"> <li>1. In the Jobcode and Provider calc methods, corrected by updating the formulas in column BG and LineRef Jobcode 29 to divide by the FTEs to convert the formula to salary per FTE.</li> <li>2. In the Jobcode and Provider calc methods, corrected by adding logic to test for month 1 and apply the retirement limits to just that month.</li> </ol>
<p>PFB-08358 - Contract Provider Labor not flowing to Expense tab [TFS 41850]</p>	<p><b>Issue:</b> In 2019.3, the Contract Provider lines of the Provider template &gt; ProviderComp tab do not flow to the Expense tab for the corresponding dollars and hours accounts listed in columns CK and CL. These lines flow to the ProviderCompData tab for account zero, which is not picked up on the Expense tab.</p> <p><b>Resolution:</b> Corrected by implementing logic in the Provider template &gt; ProviderComp tab similar to other sections in order to flow data from the static Contract Provider line items to the Expense tab for Acct and HrsAcct.</p>

Issue	Description
PFB-08496 - Proj Dllrs col for OT row incorrect formula for rate for PA/PC FTEs [TFS 43616]	<p><b>Issue:</b> When moving to 2019.3, we changed the formula logic in the Projected Dollars column of the Jobcode Block on the Jobcode tab to factor in the rate for FTEs that are Program Additions or Position Changes. There is a missing component in this formula on the OT row which could lead to understating projected dollars if you add FTEs or overstate if you remove FTEs because the rate used does not factor in the 1.5 times the rate used on the Program Addition and Position Change lines.</p> <p><b>Resolution:</b> Corrected so that when removing FTEs from the productive and non-productive rows, each row will refer to it's own rate. For example, if backing out 1.0 FTEs and rows like overtime were used, the dollars will be backed out at the overtime rate as defined by the percentage used in column F of the jobcode block for that row. This update will include any rates used in the Program Additions and Program Changes rows.</p>
PFB-08507 - Employee tab: Add New Pay Type calc methods [TFS 43870]	<p><b>Issue:</b> The PayrollGLMapping does not work correctly due to an formula issue in column DK.</p> <p><b>Resolution:</b> Corrected by updating the formulas for row range extension to 2500 (alleviating concerns of clients with workbooks that exceed this row count, causing the formula to once again break) in the Employee calc method.</p>
PFB-08510 - When adding a new job code block to a plan file, the user saves, closes, and upon re-opening the plan file, the new job code is duplicated [TFS 44019]	<p><b>Issue:</b> When adding a new job code block to a plan file, the user saves, closes, and upon re-opening the plan file, the new job code is listed twice. The issue was related to the new job code being added below the insert new job code command row. The newly added job code erroneously became a persistent part of the tab.</p> <p><b>Resolution:</b> By moving the insert command to the same row and the insert prompt, this updated the range so that newly added job codes were within the rebuildable part of the labor tab.</p>



Issue	Description
PFB-08516 - GL Account from Jobcode table not picked up on new job codes [TFS 44021]	<p><b>Issue:</b> With the changes in 2019.3, we modified our lookup logic for pulling GL account information on the Jobcode tab. If clients do not use the PayrollGLMapping table or Paytype table for GL Accounts, when a job code is added manually on the Jobcode tab or by setting the NYBKHA in the ActPay27 table to 1 to interface in, it does not bring in the account from the Jobcode table, thus dollars and hours cannot flow to the Expense tab.</p> <p><b>Resolution:</b> Corrected by incorporated RelatedColumnValues for the JobCode block calc method to populate the additional required fields. These column values are now resident in the Jobcode calc method so that the lookup to the Jobcode.StdHours, Jobcode.HRAcct and Jobcode.GLAcct are established.</p>
PFB-08500 - AQ1 not active for ProviderSum tab	<p><b>Issue:</b> With the changes made in moving to 2019.3, AQ1 on the ProviderSummary tab is hardcoded to Off. As a result, the system will not bring in the current settings from the Provider Config Driver.</p> <p><b>Resolution:</b> Corrected by replicating ProviderDetail!AQ1 in ProviderSummary!AQ1 since they used the same parameters.</p>
PFB-08595 - Detail calc method on Stat_Rev tab includes incorrect formula for History spread [TFS 44216]	<p><b>Issue:</b> On the Stat_Rev tab when using calc methods that allow for a spread option of History, the spread logic in the monthly values refers to the Configuration tab of the Master template. However, when using spread logic, we always need to use DB fields from the prior year when the periods are past the period used for current year. (For example, if YTD is thru period 8, the periods 9-12 should be prior year).</p> <p><b>Resolution:</b> Updated the formulas on the Configuration tab to resolve to the prior period table.</p>
PFB-08431 - Pay types for Global Benefits not being reflected in Col DN of PComp tab [TFS 44474]	<p><b>Issue:</b> In 2019.4, the logic to show the proper pay type for Global Benefit lines on the ProviderComp tab may not return the expected paytypes due to a missing parameter in one of the AQs.</p> <p><b>Resolution:</b> Corrected by updating the related AQ on the Drivers tab of the plan file.</p>

Issue	Description
PFB-08532 - Provider List driver - Global Salary [TFS 44475]	<p><b>Issue:</b> When using Global Benefit rows from the Provider List driver, the values would not spread correctly in rows 2 thru 5 of global benefit rows on the ProviderComp tab. The issue was related to a range reference that was not locked to the needed row.</p> <p><b>Resolution:</b> Corrected by making formula update to rows two thru five of the global benefit section.</p>
PFB-08531 - Provider Comp tab - Summary View there are no totals for the FTEs or hours, even after saving [TFS 45356]	<p><b>Issue:</b> When working on the ProviderComp tab and everything is in summary view, no totals for the FTEs or hours display - even after saving.</p> <p><b>Resolution:</b> Corrected by doing the following:</p> <ul style="list-style-type: none"> <li>• Mirrored the "Total" tags identified in column CP in new column location (column CJ) for the template and Provider block calc methods.</li> <li>• Adjusted the logic for Hours, FTEs, and FICA to reference column CJ instead of column CP to display on the summary section of the calc method.</li> </ul>
PFB-08653 - Duplicate provider blocks appear in ProviderSummary sheet when provider does not have history	<p><b>Issue:</b> A user adds a new provider to the PROVIDER table and drivers, and then inserts the Add New ProviderSummary calc method on ProviderSummary for the provider. The user then adds data and saves the plan file. The next time the plan file is opened, the provider block displays twice, resulting in recalculation errors due to duplicate keys.</p> <p><b>Resolution:</b> ProviderSummary uses a single calc methods for interfaced and add new. Persistent plan file requires key for add new once the record is saved to the db. If key does not exist, insert/update AQ will populate record found in table and persistent record with other save rows produce a save error. Incorporated formula to derive keys for AQ7.</p>
PFB-08666 - Employee tab duplicate new job codes [TFS 46726]	<p><b>Issue:</b> After adding a new employee, a recalculation may cause a duplicate occurrence of the added employee block.</p> <p><b>Resolution:</b> Corrected by adding the needed rebuild keys to the Add New Employee calc method to prevent the system from creating a duplicate.</p>

Issue	Description
PFB-08683 - Employee Tab Job Code calc method references a blank row [TFS 46733]	<p><b>Issue:</b> An error message displays indicating a duplicate row may display below the "Click here to insert new paytype" section of the job code. This may occur when using the third Non-Productive row of the Employee calc method.</p> <p><b>Resolution:</b> Corrected the formula that references the rebuild key needed on the affected row.</p>
PFB-08617 - Other Pay Calc Method Changes are not being retained upon rebuild [TFS 48162]	<p><b>Issue:</b> If changing the calc method in the Dept Other Pay section of the Jobcode tab, the changed calc methods reverts to original calc method upon rebuild of a plan file.</p> <p><b>Resolution:</b> Identified that the change calc method rules require a value or formula in a related cell to mitigate a replacement calc method with an empty cell. An empty cell from the replacement calc method will override the former. Corrected by incorporating formulas to derive key values in each dollars AQ.</p>
PFB-08546 - Fixed Adjustments to Target totals on JOBCODE do not sum correctly [TFS 46545]	<p><b>Issue:</b> When using the Fixed Adjustment rows of the self balancing option, the row reference was incorrect resulting in the adjustment not being recognized.</p> <p><b>Resolution:</b> This issues resolved when resolving an issue with Add New jobcode which corrected the last row range reference.</p>
PFB-08708 - Duplicate Patient Rev rows in Initiatives tab after recalculation [TFS 46965]	<p><b>Issue:</b> The Patient Revenue calc method may duplicate a row after recalc. The issue is due to a formula error in the rebuild key column for this calc method.</p> <p><b>Resolution:</b> Corrected by updating the rebuild logic on row 3 of the calc method.</p>
PFB-08586 - Hide columns BU and BV when "Budget Hide Salaries" role is assigned [TFS 46721]	<p><b>Issue:</b> When a user is a member of Budget Hide Salaries and navigates to the Jobcode sheet, the start rates are hidden when scrolling to column BU and BV.</p> <p><b>Resolution:</b> Corrected by implementing the proposed [hidecolumn] logic similar to formulas identified in column G for multiple views. Determination for role based views located on Variables tab.</p>

Issue	Description
PFB-08631 - FIF: Employee tab - Dept Level Budgeting [TFS 46746]	<p><b>Issue:</b> In previous versions, Dept Level Pay populated on the Employee tab through AQ7 with the start/stop tags in column EE. In the Master Template in the 2019.4 release, the Dept Level Pay uses AQ8. Column EE on the template references AQ7, which is no longer correct.</p> <p><b>Resolution:</b> Updated the formula to use Dept Pay AQ to use AQ8.</p>

## Utilities

Issue	Description
PFB-08323 - Budget Deductions utility - Total Patient Days - Globals row [TFS 41841]	<p><b>Issue:</b> In Budget Deductions utility (Reports Library\Budgeting Utilities\Balance Sheet &amp; Deductions\Budget Deductions), on the Total Patient Days - Globals row (row 116 in template), there is a formula reference to the incorrect month in the monthly columns AL:AW.</p> <p><b>Resolution:</b> Corrected the formula Budget_Deductions!AL116 and copied it to Budget_Deductions!AM116:AW116.</p>
PFB-08499 - Stat_Rev OthStat Locate Method [TFS 45553]	<p><b>Issue:</b> The formula in Column AY of the Non-Key Statistics section determines which key stat a given non-key stat should follow as a corresponding driving statistic. The three choices are IP, OP, Oth. KeyOth should be referenced with row 61 instead of 63.</p> <p><b>Resolution:</b> Corrected by updating the formula in the Stat Rev tab and the Add New Statistic_Oth calc method so that the use of KeyOth will be recognized.</p>

## Workbooks

Issue	Description
PFB-08560 - Add New ProviderComp not updating to Expense tab (PayrollGLMapping) [TFS 44074]	<p><b>Issue:</b> When using PayrollGLMapping table and adding a new provider via the Insert option and then saving the ProviderComp part, the expectation is that the new values will display on the Expense tab. The core issue was that while in a current session of a provider plan file, the update to the Expense tab was not being seen immediately upon save. The plan file had to be closed and reopened. This has been corrected.</p> <p><b>Resolution:</b> Corrected by incorporating similar logic from the ProviderComp calc method to the Add New Provider calc method for columns IH, IJ-IK, IX, and IW.</p>

## Report updates

No issues were addressed in this release

## Issues resolved in 2019.4.5

The following tables list the resolutions for issues addressed in 2019.4.5, released on January 11, 2021:

## Driver, template, calc method, and other non-report items

Provider

Issue	Description
PFB-08673 - Budget Provider Detail - Payments [TFS 49363]	<p><b>Issue:</b> When interfacing payments for Provider Detail, Payments is set to use AQ10, which is hard coded to be turned off. In previous versions of the product, it was linked to the Revenue. In the current set up, Revenue is AQ11.</p> <p><b>Resolution:</b> Corrected by activating and reconfiguring AQ10 to be active based on setting from Provide Configuration driver and incorporated into the RunAxiomQueryBlock functionality to populate plan file when used.</p>

## Report updates

No issues were addressed in this release

# Manual configuration instructions and technical considerations

Review the following manual configuration instructions and/or technical considerations before beginning the implementation process for Axiom Budgeting and Performance Reporting 2019.4.

## Global Data Budget drivers

The filter capability has been refined to better narrow down the available departments and/or accounts to specify in this driver. As a result, we recommend that you review the filters and adjust them accordingly, if needed. Specifically, please note any duplicates or possible orphaned records. Part of this process may include cleaning up records in your data tables.

Note the following filter changes with the 2019.4 release:

- In the DEPT and ACCT filter fields, make sure to only use DEPT or ACCT filters.
- Under the ACCT filter field, the driver lists the current filter and the last saved filter.
- When inserting a new department or account row, the system only offers a selection of departments or accounts that meet the filter criteria. You can no longer enter the department or account number by simply typing it in the field.
- The system will not allow you to save duplicate records.

**Action item:** Due to the change in the filter setup, review the previously saved filter and edit it to fit the new format when rolling over to a new file group. The new default filter is the following: Acct.KHASTdLine LIKE 'GlobalData%'

Global Data Budget

FY 2049

AND

ACCT.Type='Expense'

ACCT.Type='Expense'

ACCT.Type='Expense'

<< DEPT Filter PLEASE NOTE: Restrict this filter to DEPT based filters (DEPT groupings will work).

<< ACCT Filter PLEASE NOTE: Restrict this filter to ACCT based filters (ACCT groupings will work).

<< Current Filter PLEASE NOTE: Changed filters may result in orphan or duplicate records from previous processing.

<< Last Saved Filter

Department KHABgtMap	Account KHABgtCode	Dept Description	Account Description	FY 2047 Actual	FY 2048 Actual	FY 2049 Budget	YTD Actual	Proj
10000	600000	EHS Balance Sheet	Salaries	0	0	0	0	
10001				0	0	0	0	

Save

10000

600000

EHS Balance Sheet

Salaries

0

0

0

0

10000

10001

17840

17850

17885

17891

17895

19000

New Dept/Acct Row

For instructions, see "Budget Global Data 1-4" in the online help.